

The Bed Sensor detects in the base whether a client is in bed or not. This detection is achieved by measuring the pressure applied to the mattress.

False notifications are eliminated, and the client's privacy is respected. The Bed Sensor works on batteries and communicates completely wirelessly. This allows the Bed Sensor to be easily installed and / or moved.

The in / out bed functionality can be wirelessly connected to an existing Nursing Desk System through an Alert Box.

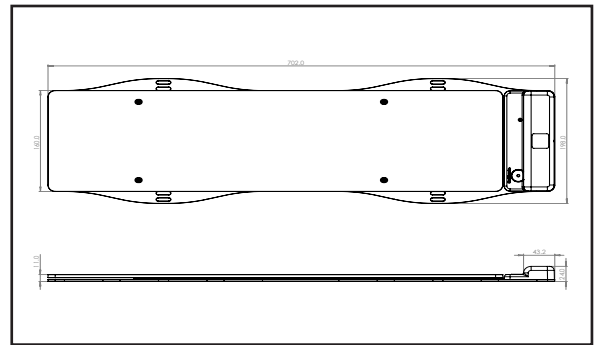
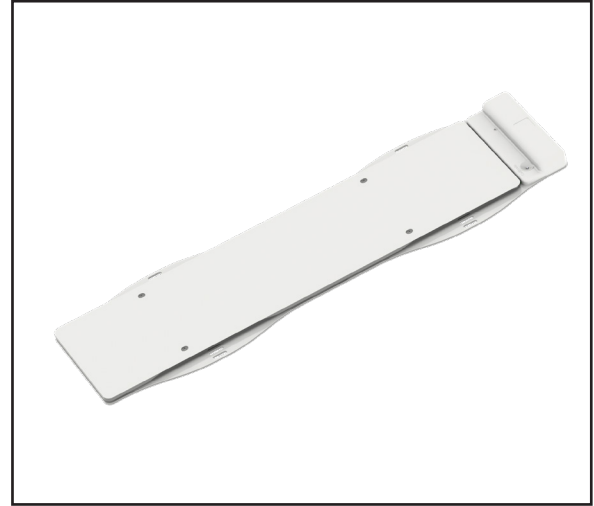
The Bed Sensor is equipped with Bluetooth Low Energy. When used in combination with Kadex Locators, the Bed Sensor can be used for indoor Location Based Services.

The Bed Sensor should be mounted at the heap height between the bed frame and the mattress. If the client assumes abnormal postures while sleeping, multiple Bed Sensors should be placed.

From the Kadex Pro Server , the product is automatically checked for battery voltage, signal strength and correct functioning.

Scope of delivery :

- Bed Sensor
- Battery 3 x LS14500 AA 3.6V



BED SENSOR VERSIONS

Article Number	Model
219954500	Bed Sensor
219954400	Bed Sensor + BLE (In development)

TECHNICAL DATA

Housing	ABS
Color	White (RAL 9016)
Weight	1200 Gram
IP Rate	IP 41
Frequency	868 MHz
RF Transmitting Power	Max. 13 dBi (20mW) @ 868MHz
Voltage	Battery,3x LS14500, AA, 3,6Vdc
Antenna	Integrated
Feedback	1x Feedback LED 1 x Buzzer

Temperature	
Operational	-10 °C up to 40 °C
Storage	-20 °C up to 70 °C
Relative Air Humidity	90% at 25 °C
Standard Conformity	
Radio Approval	EN300 220-1
EMC - R&TTE	EN301 489-3
Safety	EN 60950-1
Environment	RoHS / WEEE